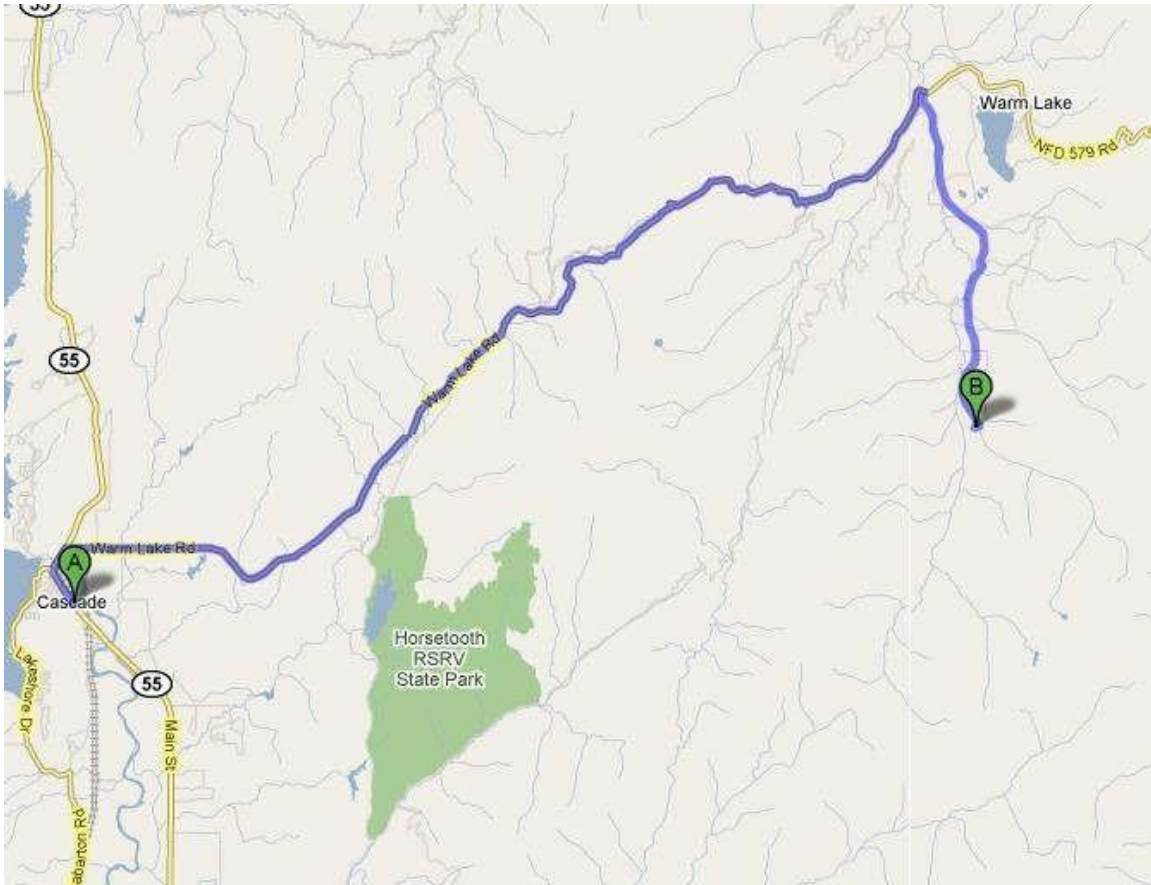


Yellow Jacket Trail Head & Vulcan Hot Spring

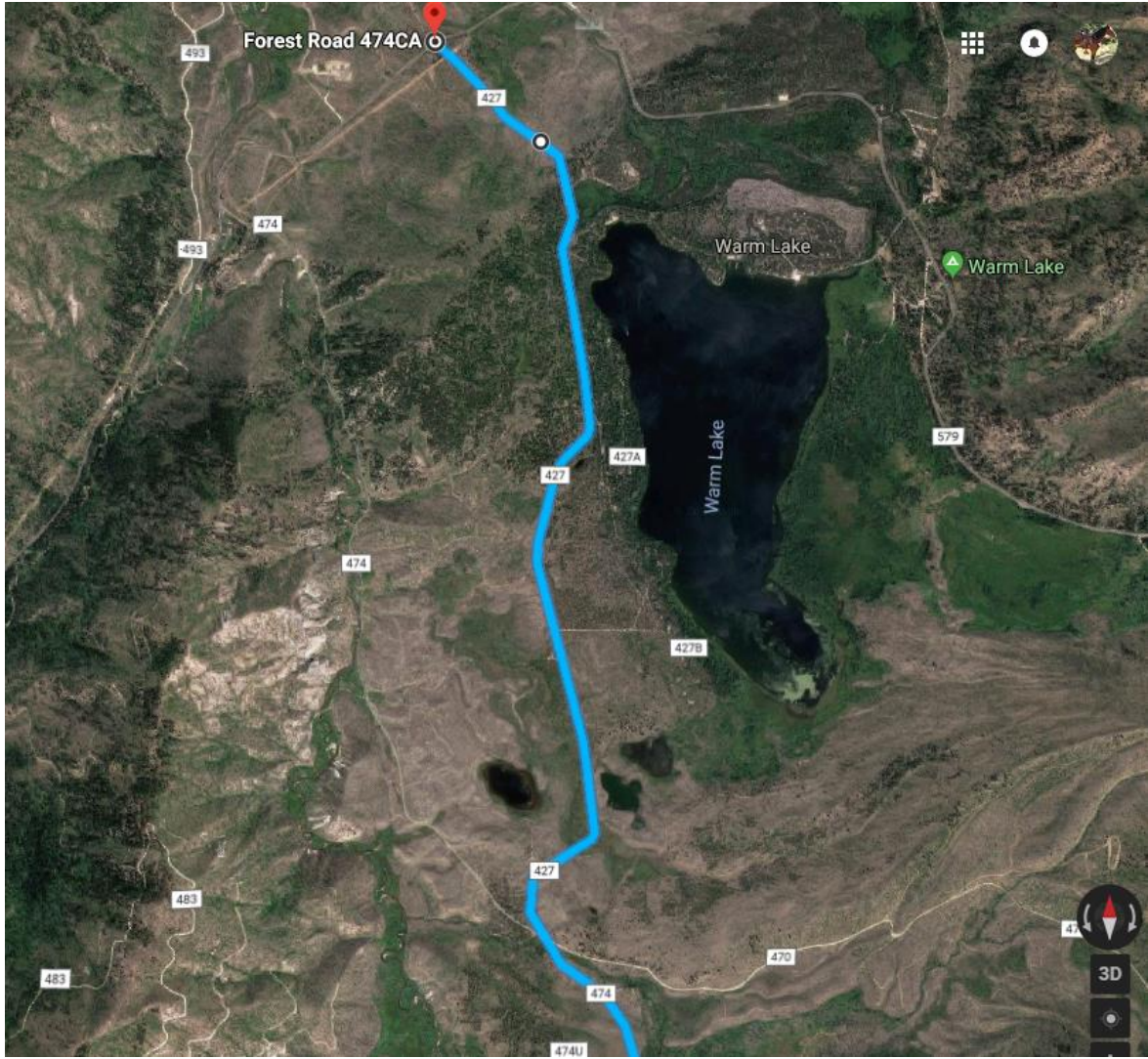
Camping will be in a meadow near the Yellow Jacket trail head, south of Warm Lake.

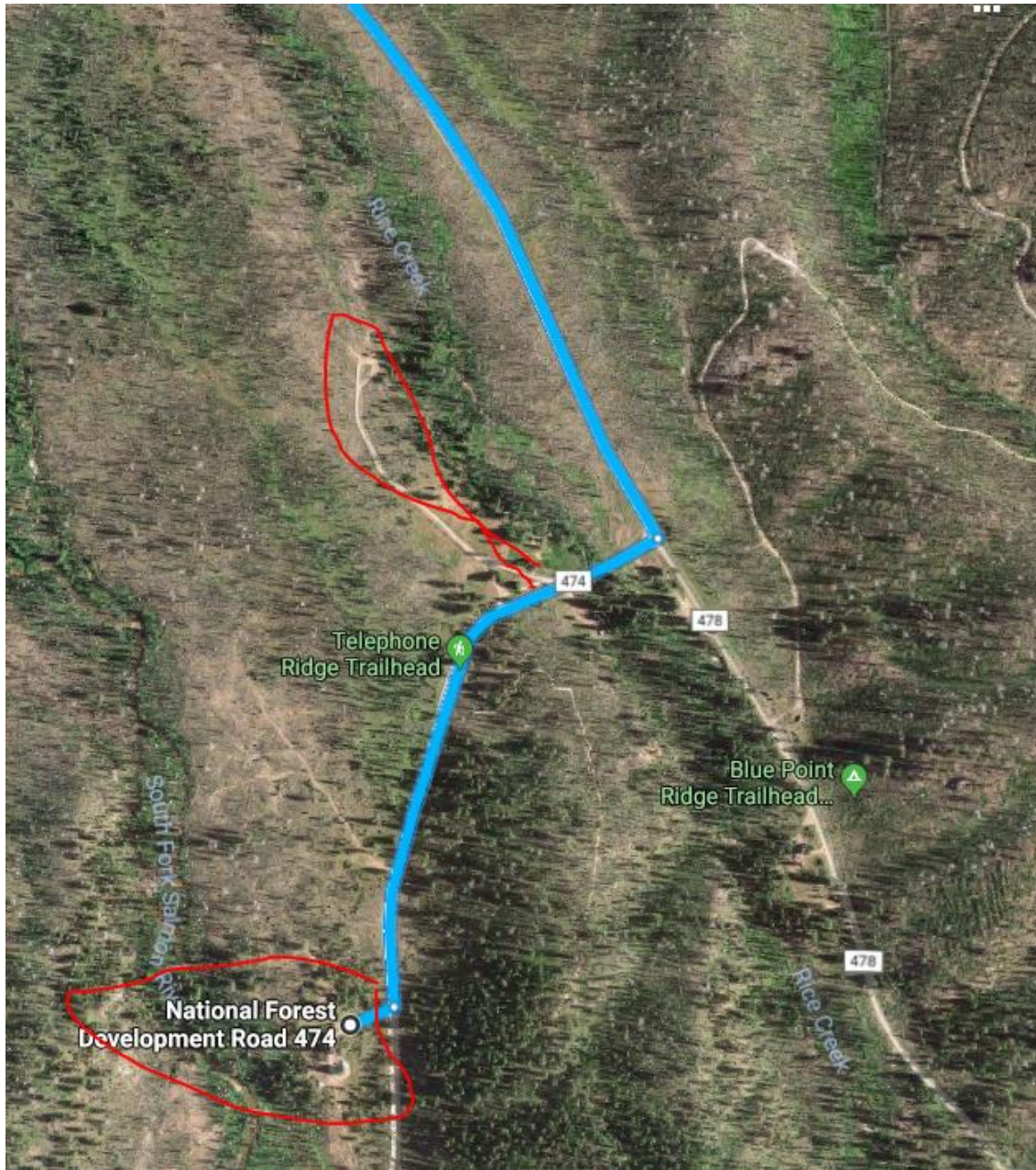


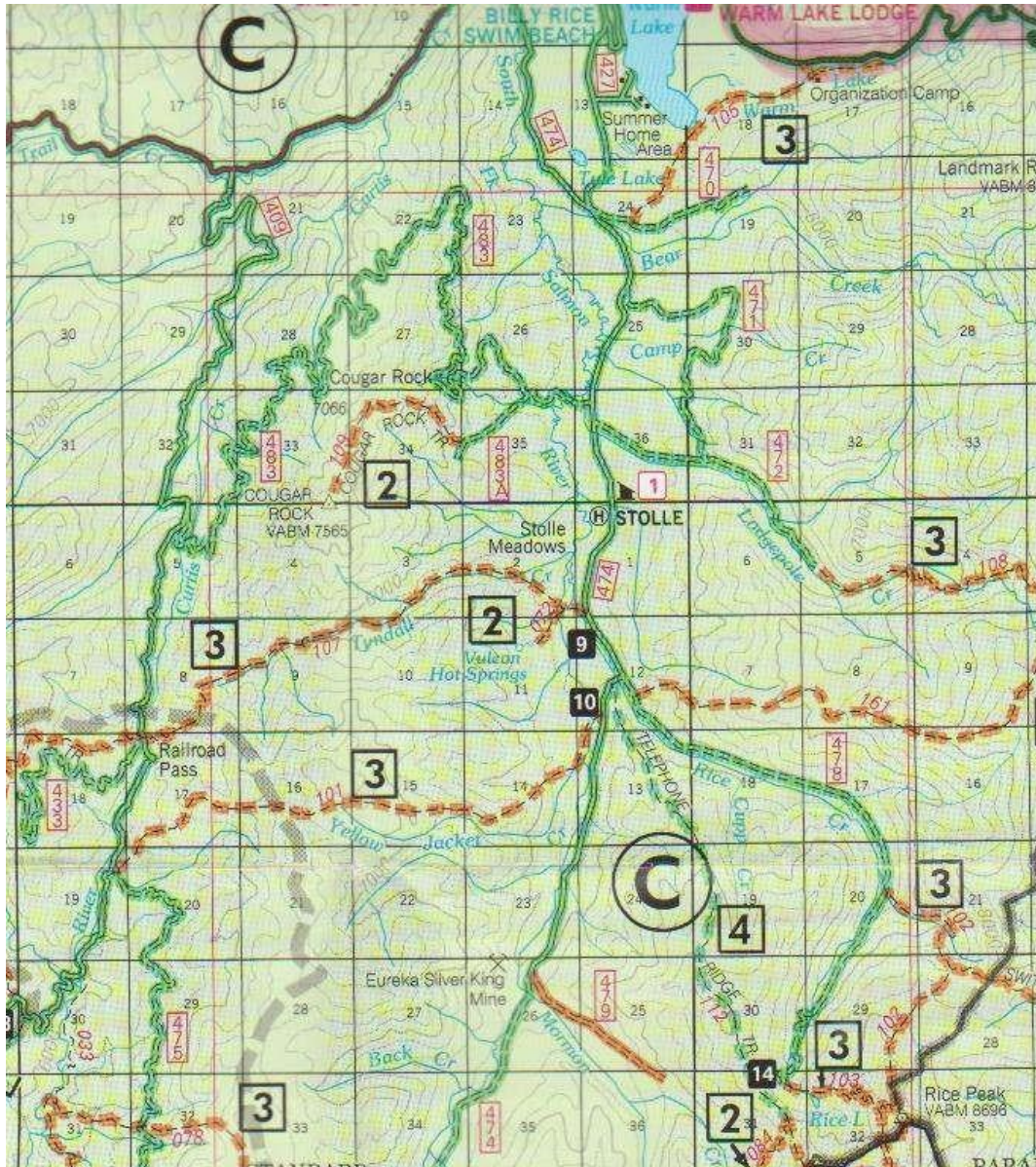
The camp ground is near the Yellow Jacket trail head which is [10]

The north end of Stolle Meadows Road (474) is washed out (Winter of 2017) so continue down warm lake road to the next right turn which is 474CA or the cottage road for the west side of Warm Lake. Follow this road south and it will merge with the Stolle Meadows road. There are two horse camping areas, the preferred is next to the river at the Yellow Jacket Trail head, but the other is also nice in a meadow just after you turn. (also, very popular with other users)

GPS 44.5622284, -115.6835407







Plan on high lining your stock at night

There is a forest service bathroom at Vulcan hot springs [9] if it didn't burn down

Certified hay will be available for Squaw Butte members