

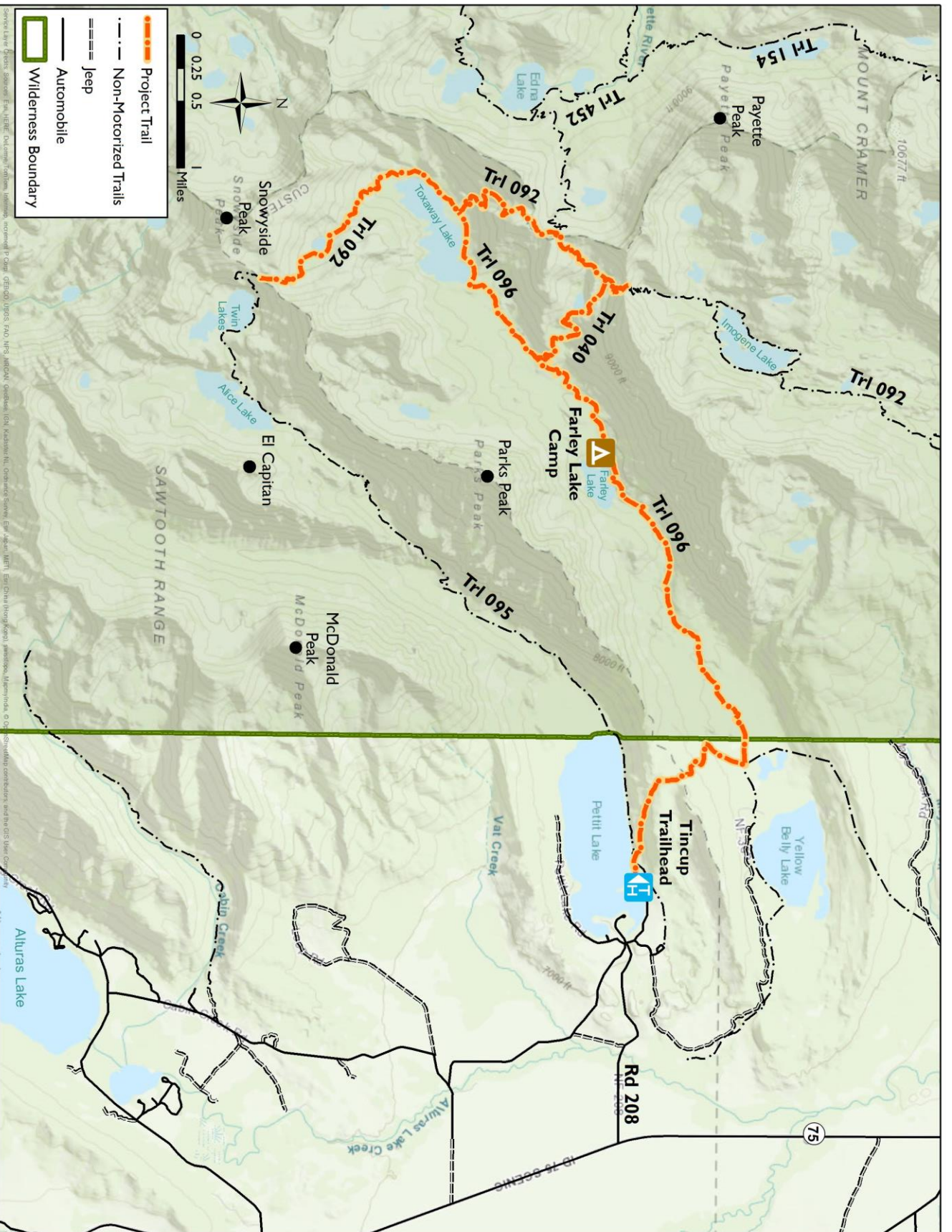
ITA – Farley Lake Pack Support Project



Camping at Pettit Lake – Tin Cup Trail Head

Farley Lake – Where crew will be dropped off for a week





Dates: Pack-In July 14/15 & Pack-Out July 21, 2018

Distance: 10 miles (out & back)

Total Elevation Gain: 1,650 Feet

Elevation range: 7,000 – 7,800 feet

Mountain: Parks Peak 10,208 foot

GPS Trail Head: 43.9838681, -114.8650242

The ITA group size is 12, what I have been doing is packing up the camp/food and cook on Saturday. This is 2 Yeti 45 coolers that weigh right at 60 pounds each. We have the kitchen boxes that weigh 60, those are the big items. The rest of the stuff is packed and matched up and nothing weighs over 60. It is about 6 mule loads on Saturday, by myself I make 2 trips on Saturday.

On Sunday the volunteers have no more than 30 pounds each to pack. I can always get their stuff on 3 mules. They have soft duffels and I usually put 2 per side and have no problems. The trip out I head in from Tin Cup about 6 am and head to the camp. The volunteers are tearing down camp after breakfast and I like to be there to help repack things before they get too far along. I'll reload the boxes and stuff, it is lighter but there are a few garbage bags that I will stuff in coolers.

I try to get the volunteers gear out first, so they can head home then go back and get the rest. I have one saddle horse and 3 pack animals that I have been doing this with.

I can pay mileage for folks and maybe per diem, I am writing a grant to cover the costs of this project.

A couple packers with 5 or 6 mules could do this easily.

Thanks!

Jeff Halligan
Executive Director
Idaho Trails Association
PO Box 165
Boise ID 83701
(208) 315-0079