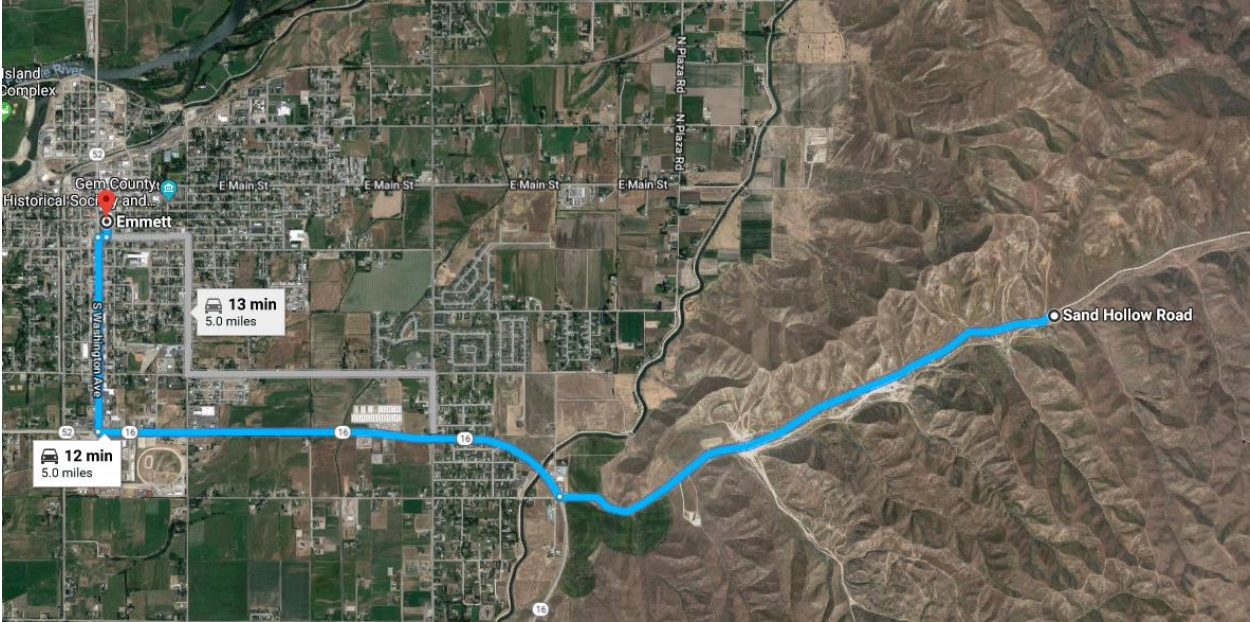


# Little Ranch Company – Gem Country Horse Park

5 miles east of Emmett on Sand Hollow road, a bit past the cycle park is a cattle guard and fence. This is the western border of the horse and hiker area.

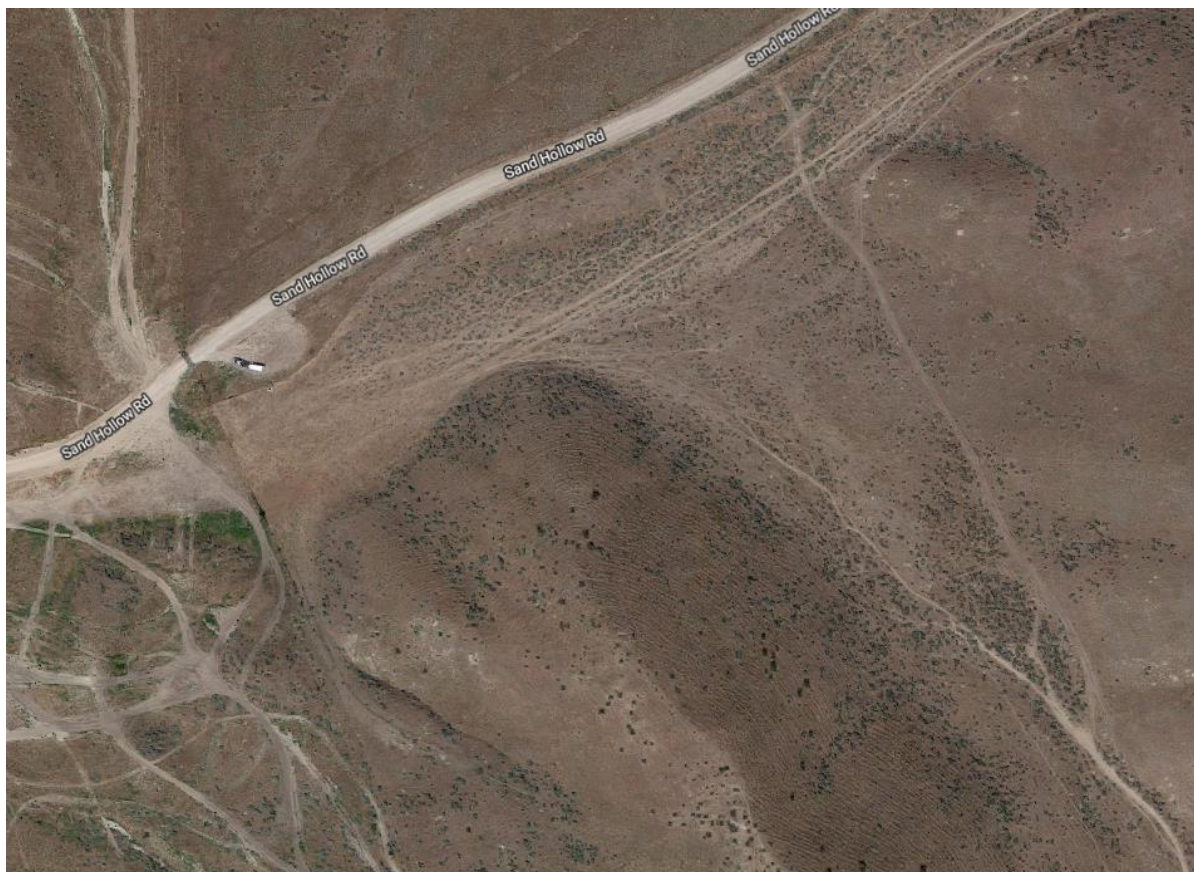


The riding area is on the south side of the road and there are only a couple of access gates into the park





The first access gate is just inside the fence after crossing the cattle guard  
There is parking for 4 or 5 trailers if you park smartly.



Another parking and access gate is a couple mile down the road at some corrals. There is a lot more room for trailers here, but make sure that the Little Ranch is not using this area before parking here. This is the eastern end of the riding area.



There are some nice loop rides up and down canyons between the hills on dirt roads and single-track trails.