

# Peace Creek Trail #034 & Camp Ground



**Length: 8.8 miles (14.2 km)**

**Use: Moderate**

**Difficulty**

**Motorcycle: Most Difficult**

**Horseback: Most Difficult**

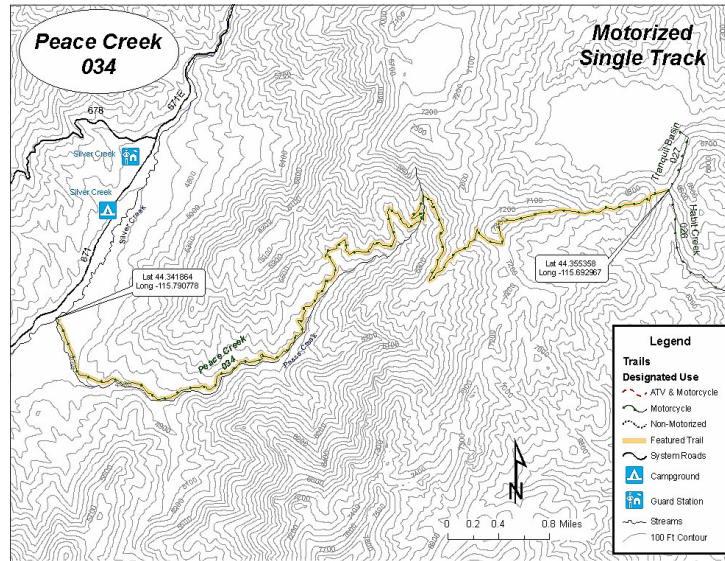
**Hiking: Most Difficult**

USGS Maps: Boiling Springs, Deadwood Reservoir

Recreation sites nearby:

Tranquil Basin Trail,

[Rattlesnake Trail](#)



## Attractions and Considerations

The trail crosses several tiny creeks that feed into Peace Creek where, in spring, wildflowers such as arnica, [lupine](#) and [sticky geranium](#) carpet the meadows. About 2 ½ miles from the trailhead, the trail steeply ascends a dry southern slope. To the north granite boulders provide scenic views in three directions. The trail levels, then ascends steeply once again through [ponderosa pine](#) forests and [sagebrush](#) hillsides. The steeper sections of the trail offer views of Peace Rock and the surrounding mountains and valleys.

Once the trail reaches a ridge, it levels and skirts the ridge's west side. The trail ends in a prominent saddle that offers views of the mountain ranges to the west. In the saddle the Peace Creek Trail is intersected by the Boiling Springs driveway which branches east and connects with the Tranquil Basin Trail. The driveway is signed about a quarter east of its intersection with the Peace Creek Trail.

Equestrians and trail bike riders should use extreme caution on the eroded, unstable and steep portions of the trail. Although the Tranquil Basin Trail and the Peace Creek Trail are linked by the Boiling Springs driveway, the Tranquil

Basin Trail is open yearlong to non-motorized use while the Peace Creek Trail is open yearlong to motorized use.

#### Trail Beginning

Elevation: 4560 ft

The trail begins at the confluence of Peace Creek and Silver Creek, and parallels Peace Creek for about one mile before it starts to climb to the ridge top.

#### Trail Ending

Elevation: 7280 ft

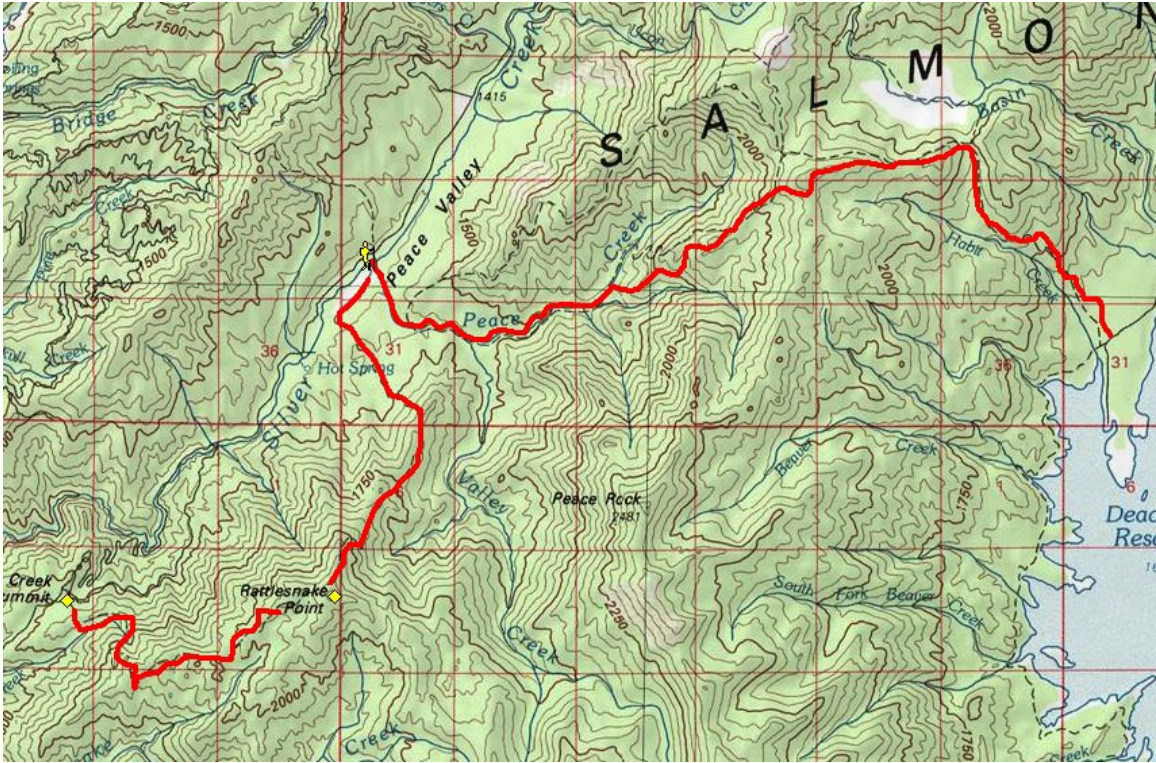
The trail ends in a prominent saddle at the unsigned junction of the Peace Creek Trail.

#### Access:

Start at Banks, along State Highway 55. Head east on the Banks-Lowman Highway about 10 miles to the [Crouch](#) turnoff. Go north, passing through [Crouch](#) on a paved road, which becomes the gravel National Forest Road 698 (NF-698). Continue north on NF-698 to the intersection of NF-671. Go northeast on NF-671 about 8 miles to a trail directional sign, park at the trail sign. There is plenty of room for trailer. There are facilities for horse camping and a FS bathroom.



Satellite View of Area



Peace Creek and Rattlesnake Trails