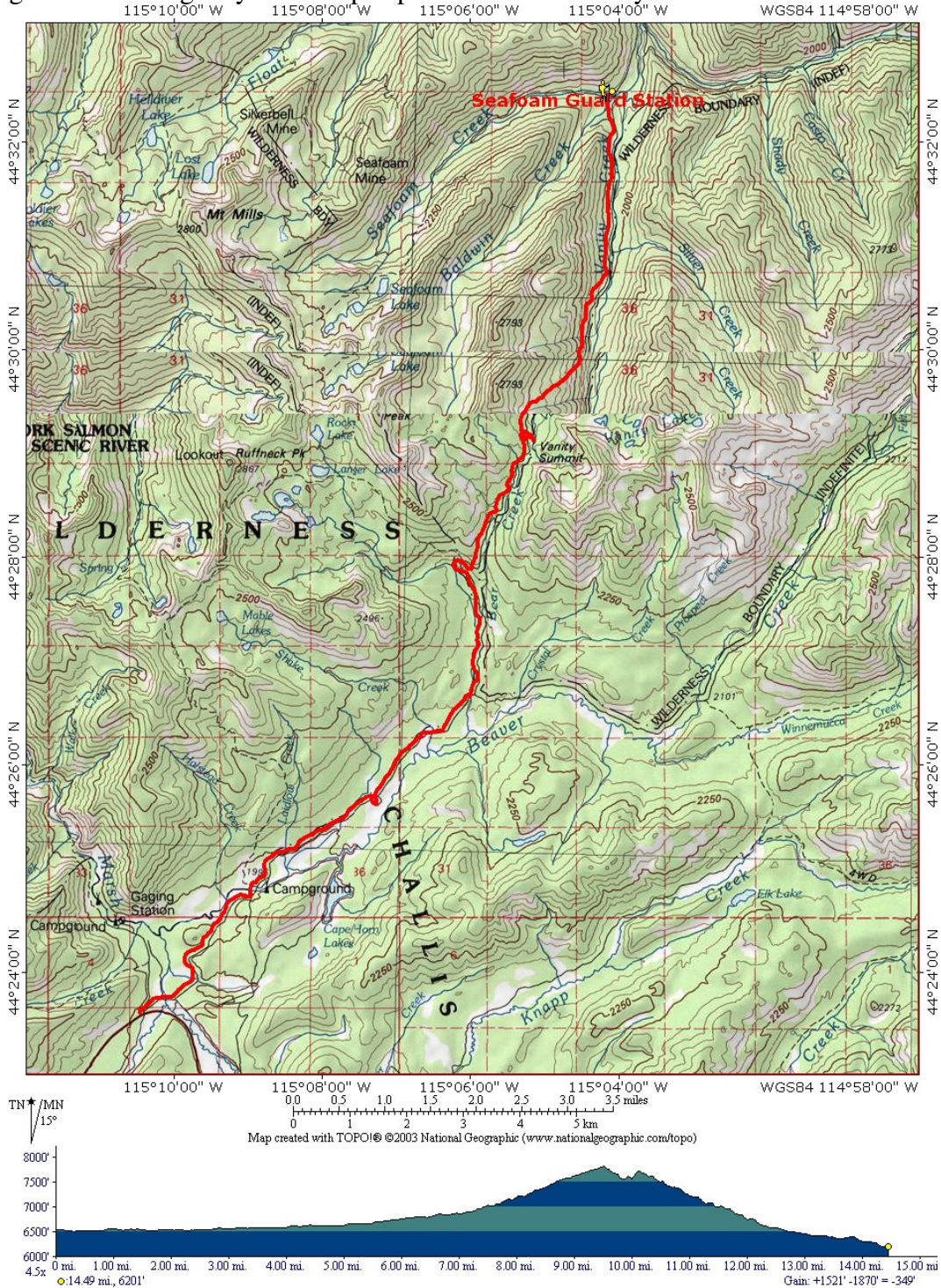
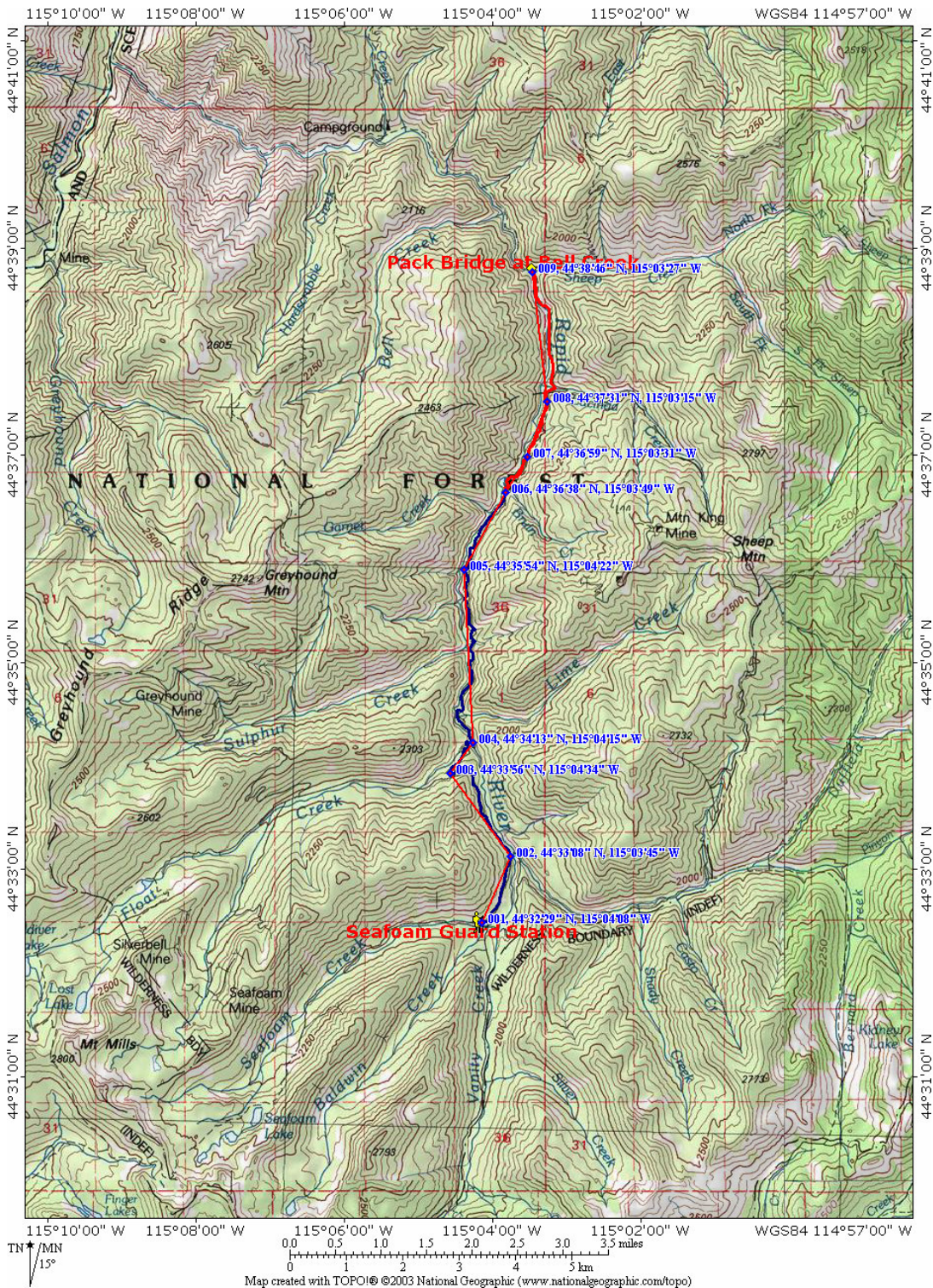


Directions to Seafoam Guard Station:

Take Hwy 21 to mile marker 118 (near Cape Horn). Turn North off the Hwy at the sign for Lola Creek Campground. Less than .10 miles there will be a right turn onto the Seafoam Road (FS Road 008.) Follow this approximately 15.5 miles to the Seafoam Guard Station. This will be the trailer parking and the staging area. The maps and images below will give you some perspective on the country.



Hwy 21 to Seafoam Guard Station approx. 14 miles



This is the route from Seafoam Guard Station to the pack bridge on Bell Creek. This will be the pack-in route approximately 10 miles, mostly in the bottom land paralleling Rapid River.



This is a satellite view of the country we'll be traveling through.