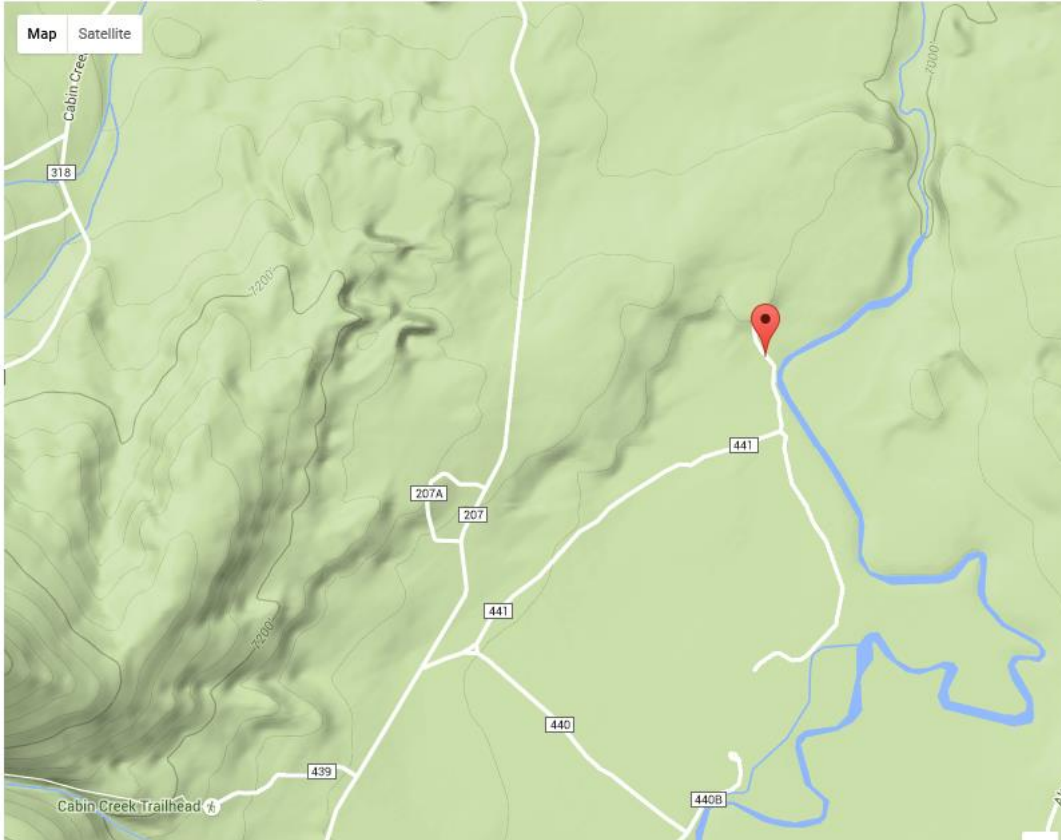


# Cabin Creek

## Sawtooth Recreation Area

**Cabin Creek** is a favorite secret location of Chick & Lorraine's clan. They have been camping here for a number of decades. The question is how they found it the first time. Located along Cabin Creek it is an almost ideal mountain camp site. It is very nice they are willing to share its location with us!

43.94748 latitude, -114.83687 longitude



Google Map:

<http://maps.google.com/maps?f=q&hl=en&geocode=&q=43.94748,-114.83687&ll=43.94748,-114.83687&ie=UTF8&z=12&om=1>







Chick & Lorraine will be leading the rides out of this camp. The Cabin Creek trail head, TR 191 is a short distance away and leads to a group of small lakes.

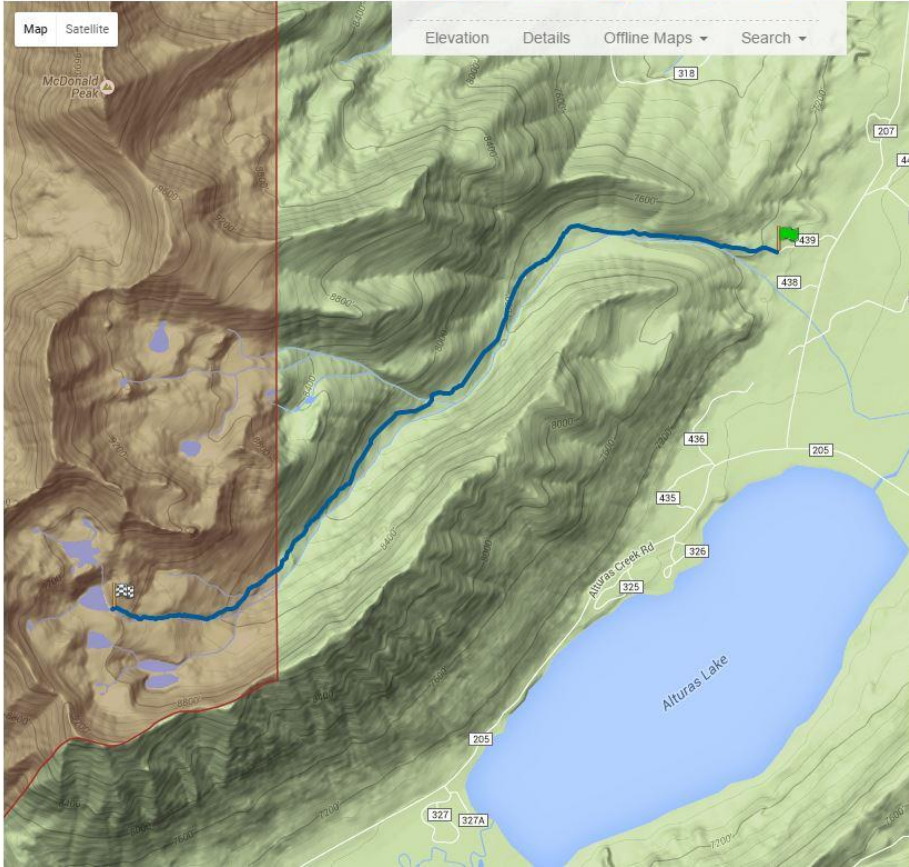
**WILDERNESS**

No mechanised travel is allowed within the wilderness area.

[Reverse Trail Direction](#)

SawtoothTrails.ORG

Elevation Details Offline Maps Search



**Cabin Creek Lakes Details**

- Length:** 7.6 miles (One Way)
- Start Elevation:** 7,151'
- Min Elevation:** 7,151'
- Max Elevation:** 8,841'
- End Elevation:** 8,828'
- Region:** Pettit / Alturas
- Uses:** Hike, Horseback
- Difficulty:** Moderate
- Trip Length:** Day Trip
- Water:** Yes [Details](#)
- Handicap Access:** No
- Wilderness:** Partial [Details](#)

**Google Earth**

Download Google Earth KML file of current trail.

[Download KML »](#)

**Offline Track**

Download GPX file to your device to view offline.

[Download GPX File »](#)

**Offline PDF**

Cabin Creek looking like a prime fly fishing river.