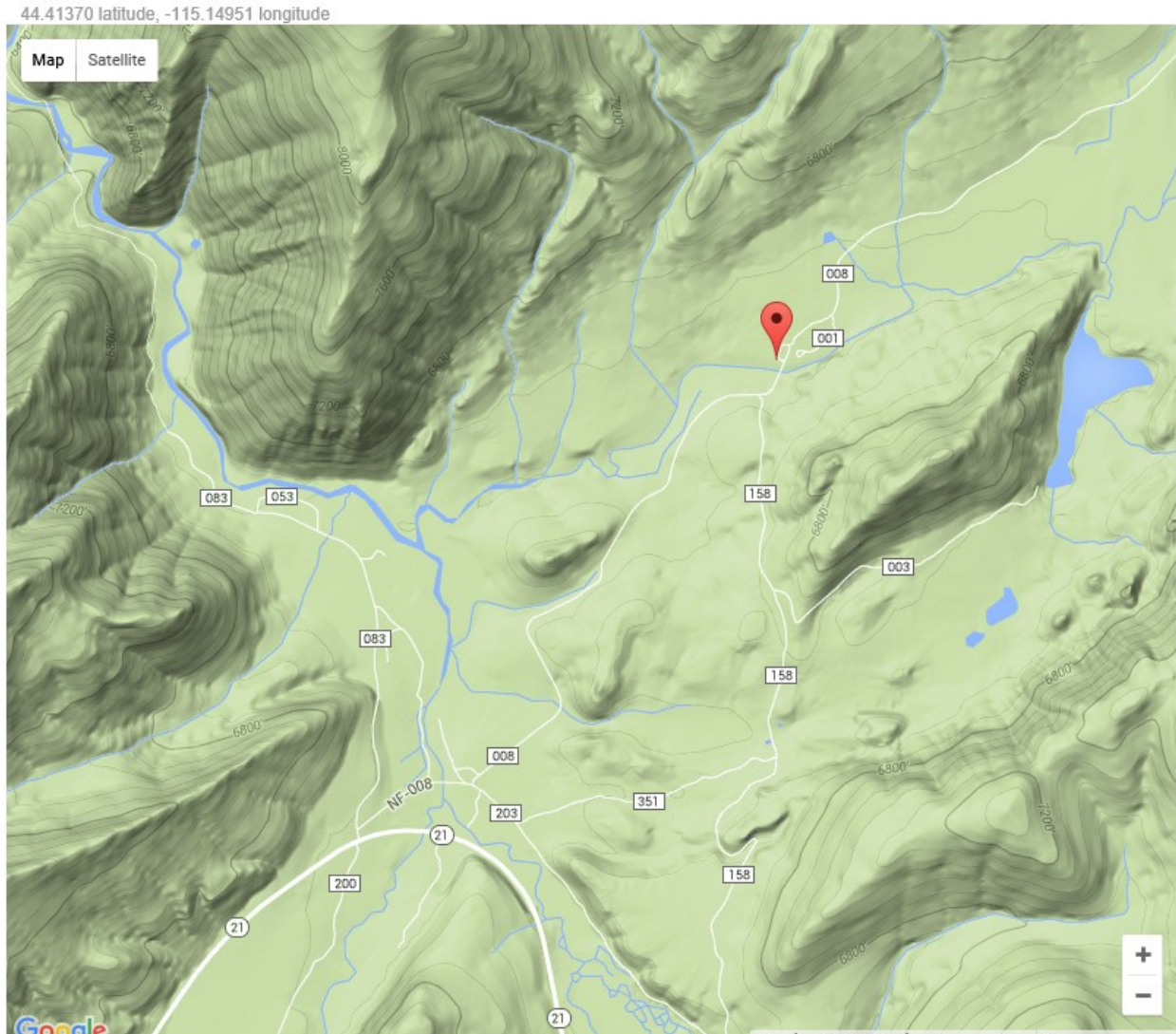


Beaver Creek Trail Head

Stanley Area – Access to many lakes & Frank Church Wilderness



Google Map:

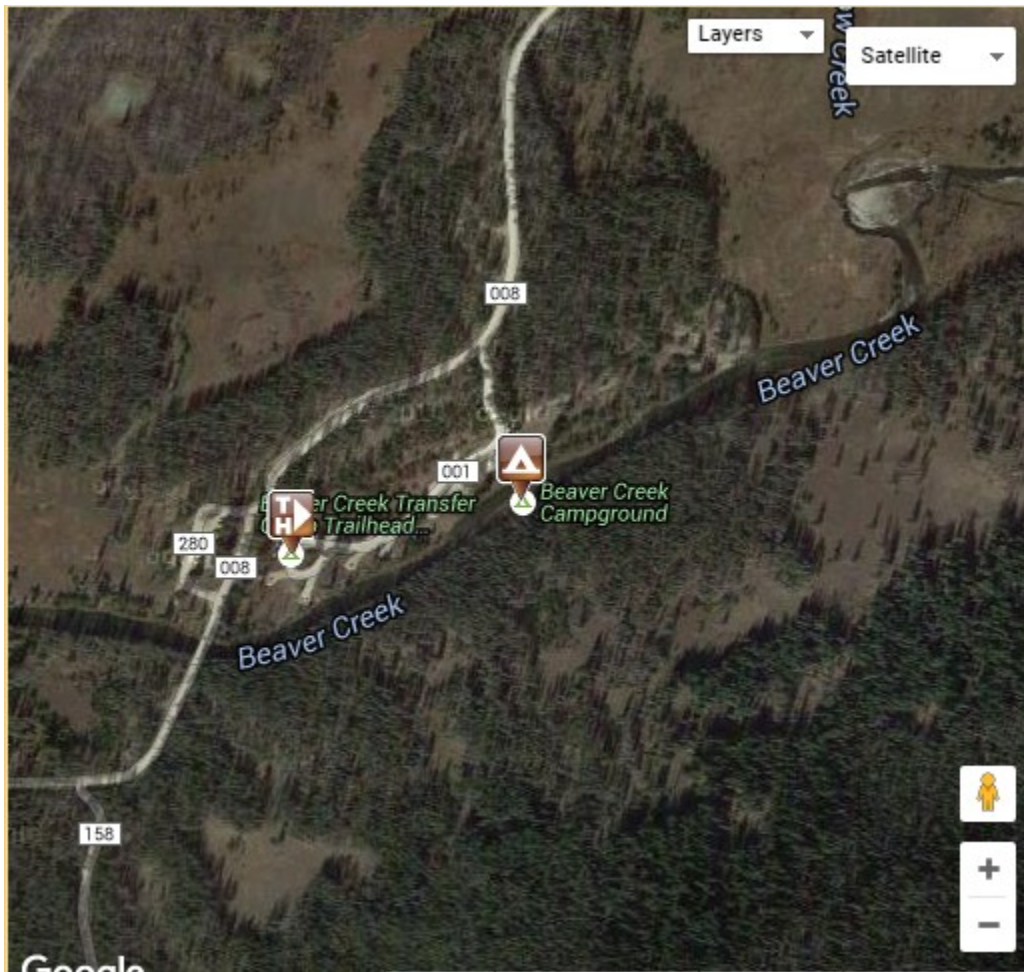
<http://maps.google.com/maps?f=q&hl=en&geocode=&q=44.41370,-115.14951&ll=44.41370,-115.14951&ie=UTF8&z=12&om=1>

Beautiful setting along Beaver Creek, this campground is close to access for the Frank Church River of No Return Wilderness. Fishing for trout in [Beaver Creek](#), in nearby Cape Horn lakes, and in the many alpine lakes found along the trail in the wilderness. Trail #4021 leaves the campground to go north into the wilderness. Horse corrals with feeding stations are across the road, at the trailhead. Facilities at each of the 8 campsites include tables and fire rings with cooking grills. Within the campground amenities include hand pump for well water and newer vault toilets.

While there are no full hook-ups, the campsites accommodate trailers and motorhomes up to 32 feet long.

Directions: From Stanley: 19 miles NW of Stanley on highway 21, turn north onto Forest Road #203, go .5 miles and turn left on Forest Road #008 and drive 3 miles. Campground on right.

From Boise: Approximately 113 miles NE on Highway 21 towards Stanley. Turn left off of highway, then turn an immediate right onto Forest Road #203 towards the Capehorn Guard Station, go .5 miles and turn left on Forest Road #008 at sign, and drive 3 miles. Campground on right.



The [South Fork Fall Creek Trail #021](#) is 8.2 miles long. It begins at Beaver Creek and ends at its junction with Fall Creek Trail #4020.

The [Fall Creek Trail #020](#) is 6.5 miles long. It begins at its junction with Seafoam Creek Route #010 and ends at its junction with the Middle Fork Trail #4001.

