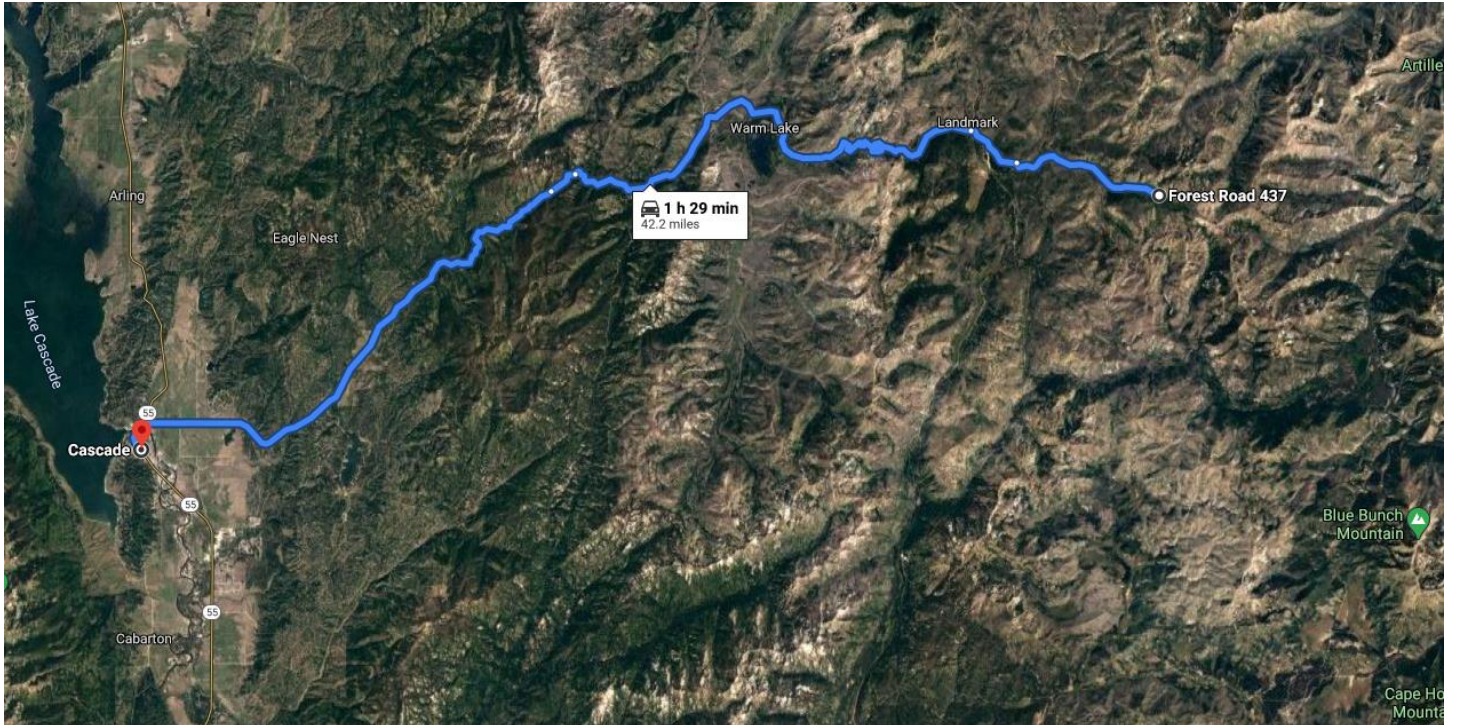


Honeymoon Lake Trail #082, Landmark (Sand Creek Road)

Salmon-Challis National Forest



The Honeymoon Trail #082 is 7.4 miles long. It begins at the Honeymoon Trailhead, at the end of the Sand Creek Road #037 on the Boise National Forest and ends at Sulphur Creek Ranch and Trail #083. (db#4031)

Allowed uses for this area include: Backpacking, Hiking, Horseback Riding; however, users should check the [Trail Condition Report](#) before attempting (not all trails are suitable for stock).

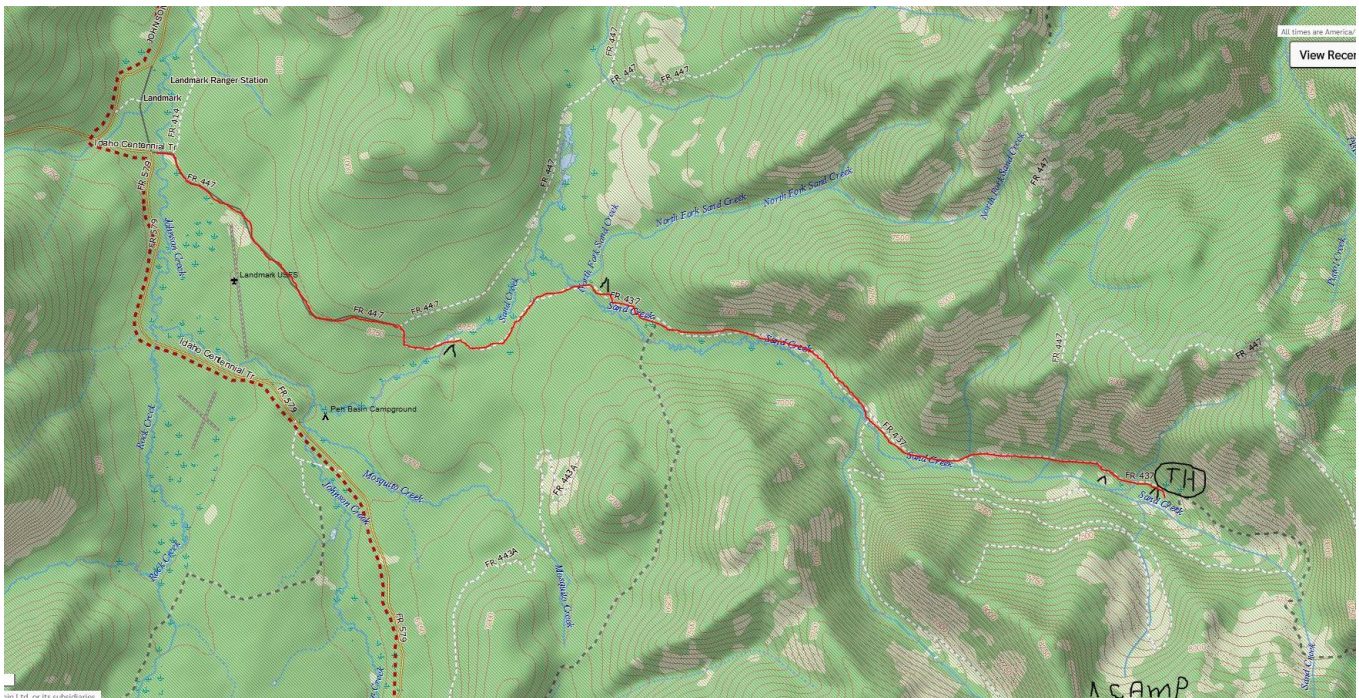
This trail is within the Frank Church-River of No Return Wilderness. Wilderness regulations apply to all users, and visitors should follow the "Leave No Trace" land ethic.

Carry a saw and a shovel, appropriate clothing, a supply of food and water, and first aid gear. Cellphones usually do not have service in this area, and help is not readily available.

Designation of a trail or road should not be interpreted that the trail or road is passable, actively maintained or safe for travel. Seasonal weather conditions and natural events may render roads and trails impassable for extended periods. Many designated roads may only be passable by high-clearance or four-wheel drive vehicles. Maintenance of trails and roads will depend on available resources, and many may receive little maintenance. Users should exercise caution and take appropriate gear for the anticipated conditions and weather.



There are at least three camping areas with access to water along Forest road 437. The first is after the first bridge crossing (small – 2 trailers), after the second bridge crossing on left side of the road, a meadow that will hold 6 trailers. The third is almost to the trail head on the right, a meadow that should also hold 6 trailers. The last is at the trail head and should hold 4 or 5 with careful parking. Some sections of the road in were rutted so using the third camping spot maybe a better choice.



HONEYMOON TR. 082
HONEYMOON L. 4
MID FK. SALMON RIV. 10

OPEN
TO



