

Joe's Creek Trail



The Joe's Creek Trail climbs steadily through high brush and thick pines to the top of a ridge. Much of this section of the trail has been severely eroded, making for a rough walk. Near the top of the ridge, the trail has been rerouted across a rocky drainage. It continues to the top of the ridge, where it fades on an open, brushy hillside. At this point, the trail becomes an old road.

Follow this road along the bare ridge and down into a large, open saddle. The trail ends here at its signed junction with West Mountain Trail. Joe's Creek Trail would be a good day hike in conjunction with Tripod Peak Trail and West Mountain Trail, which connects the two trails. From the intersection of Joe's Creek Trail and West Mountain Trail, turn north on the West Mountain Trail and travel approximately 0.4 miles to the well-signed intersection to Tripod Peak. Turn east on the Tripod Peak Trail and travel approximately 0.3 miles to the lookout. There are good views of the surrounding countryside in all directions from the lookout.

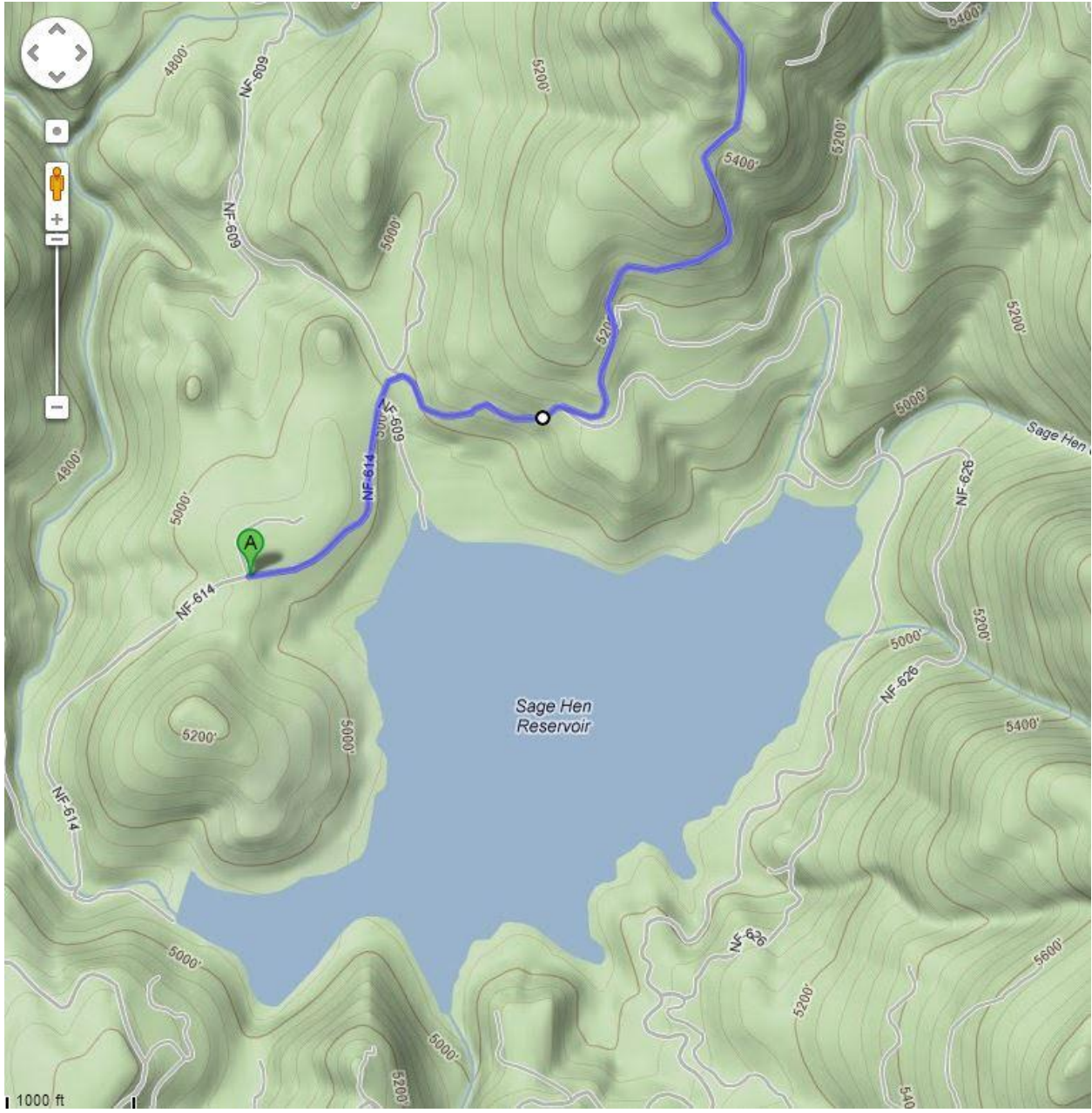
At a Glance

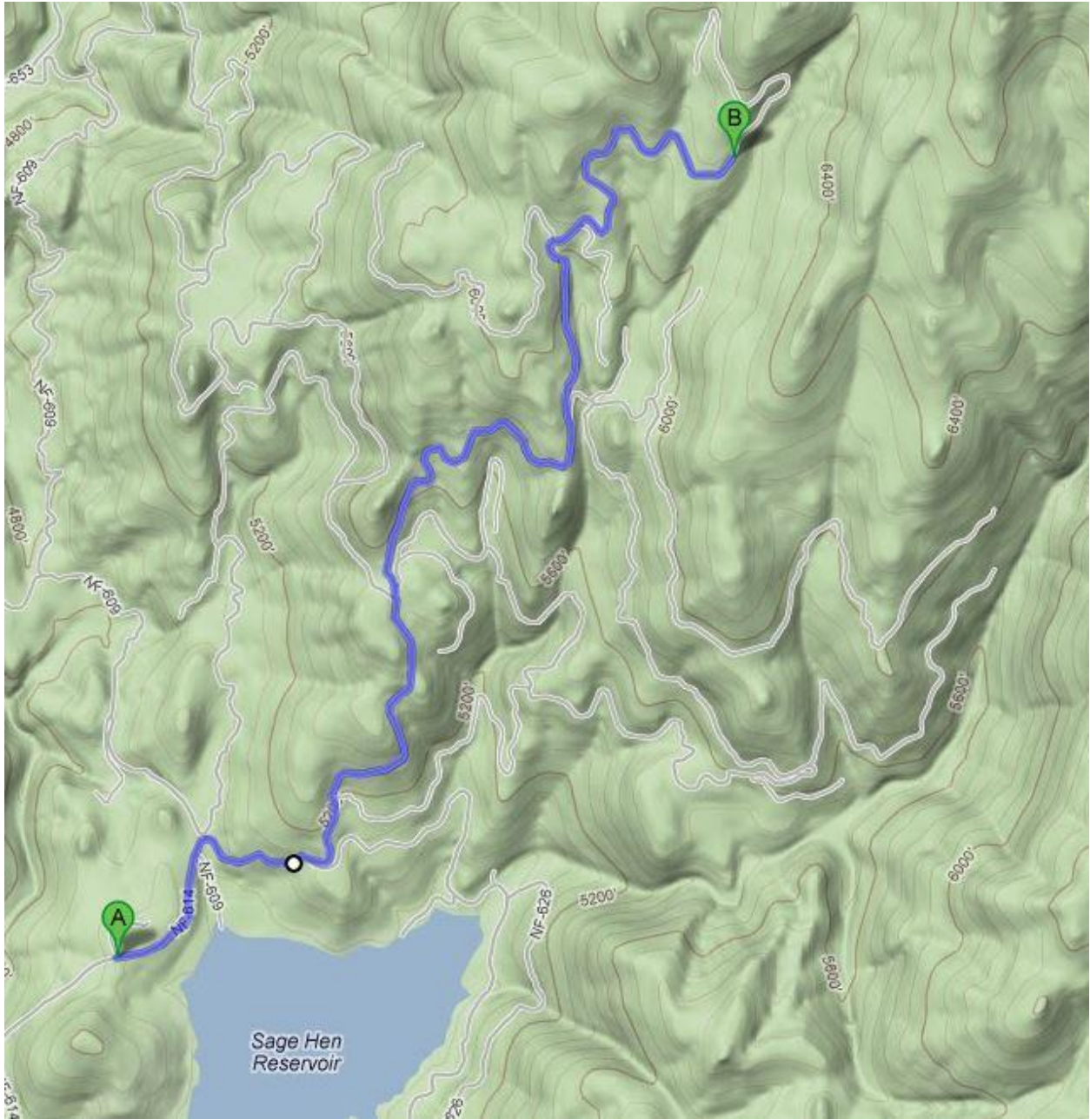
Usage:	Light
Closest Towns:	Emmett
Water:	None

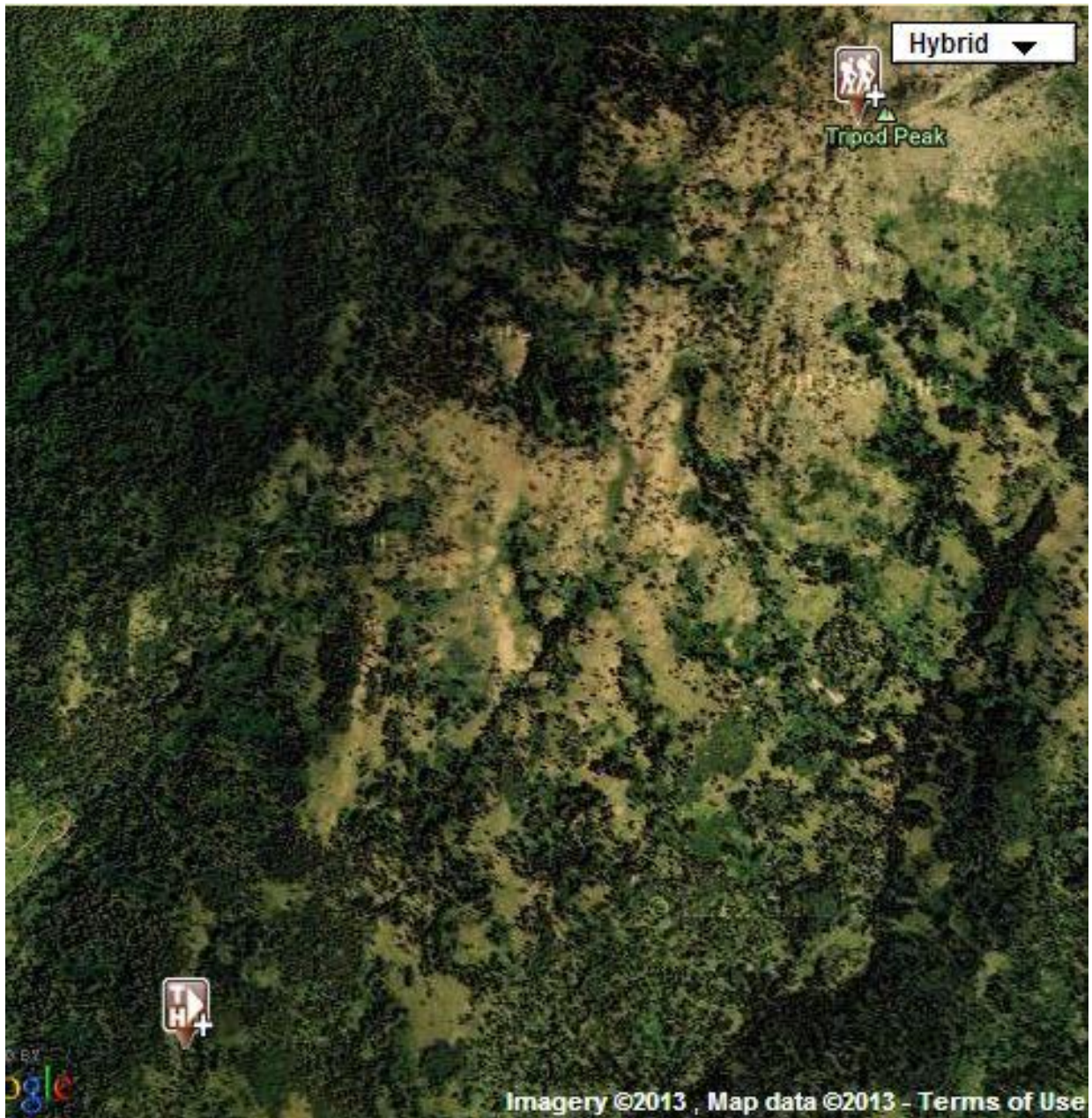
Location Length : 2.0 Miles Latitude : 44.3582 Longitude : -116.1545

Elevation : 6560 - 7360

From Sage Hen NF-614 turn left on to NF-622 and it is a bit over 3 miles to the trail head.







2.0 miles long; The Joe's Creek Trail climbs steadily through high brush and thick pines to the top of a ridge. From the intersection of Joe's Creek Trail and West Mountain Trail, turn north on the West Mountain Trail and travel approximately 0.4 miles to the well-signed intersection to Tripod Peak. Turn east on the Tripod Peak Trail and travel approximately 0.3 miles to the lookout. There are good views of the surrounding countryside in all directions from the lookout.