

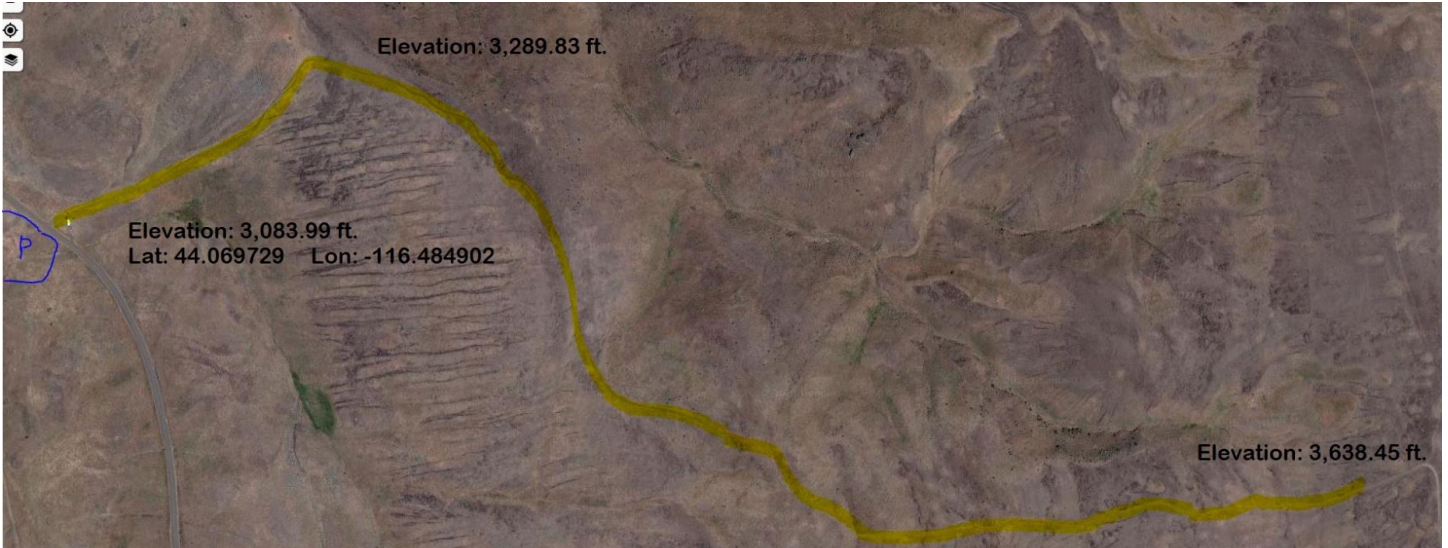
Van Duesen BLM & Private Land Access (Closed to public June 15 to August 15)

Willow Creek Area



Access gates are on the east side of the road, the first is 10 miles from the Hwy 52 & Van Duesen intersection just after climbing the road switch back. Limited trailer parking. The second gate is 12 miles in with a much larger parking area.





Looking east towards Squaw Butte

The road is quite steep in sections and is a mixture of sand and broken up volcanic rock, so shoes or boots are recommended. The ride is along this road, while there are wildflowers there is not a lot of interesting things to look at.

On top of the first ridge looking back west





Access Yes!: Oxarango - Willow Creek

