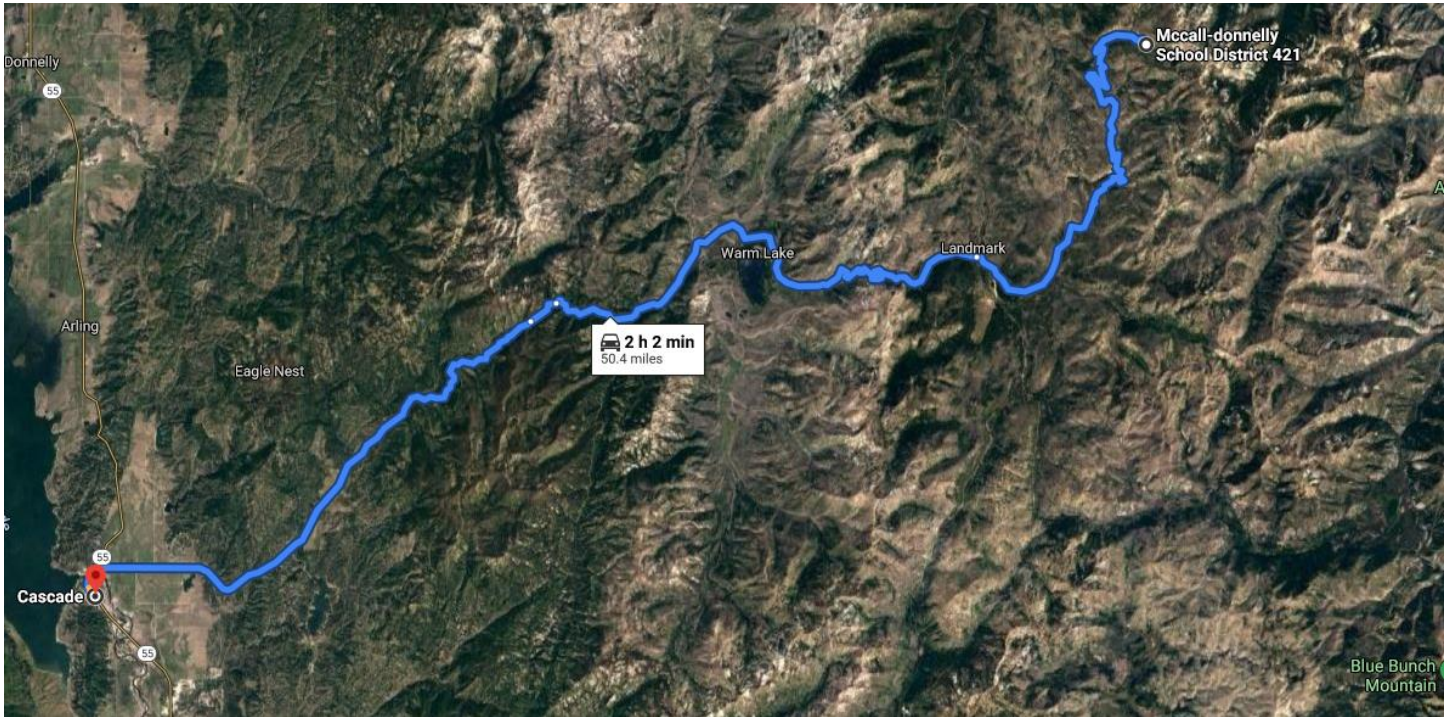
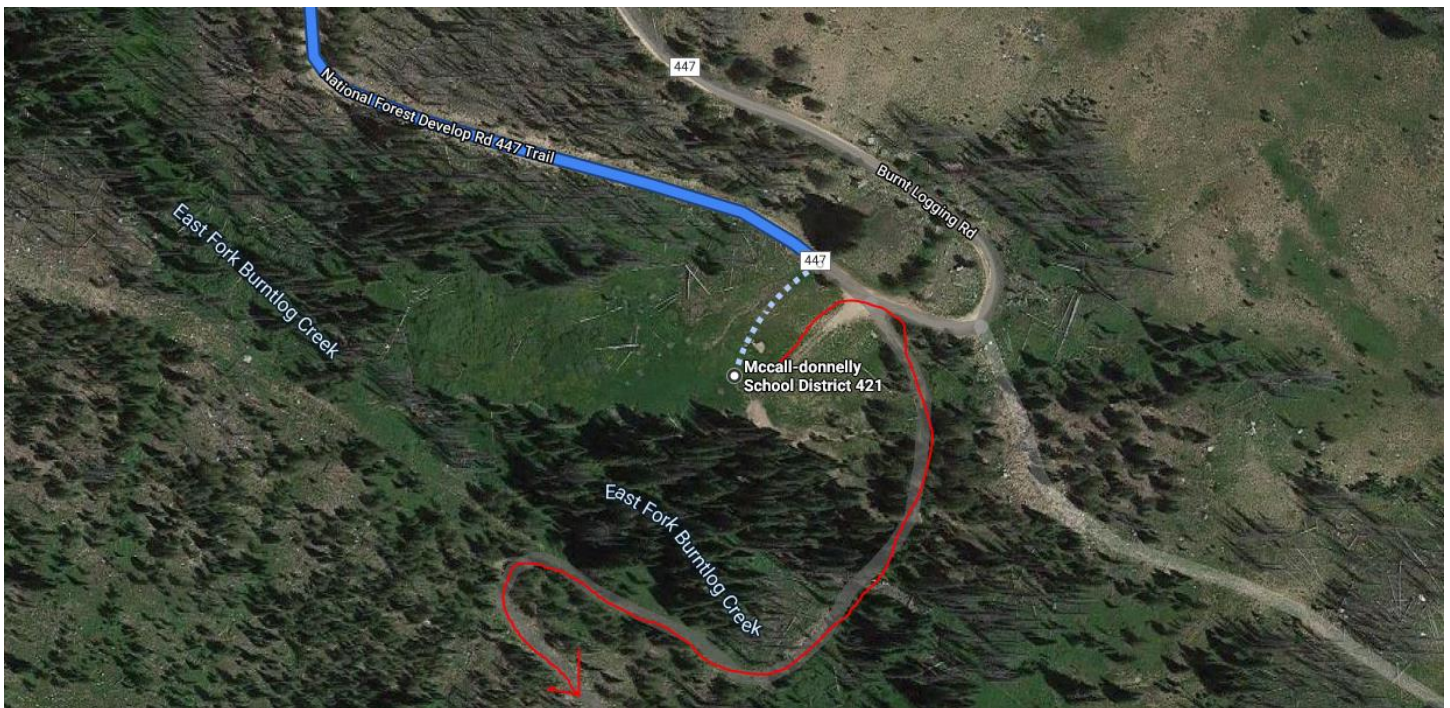


Trail Head for easy access to Pistol and 44 Lakes in Frank Church Wilderness

Trail head is off Forest Road 447 about a mile past the FR-448 sign



The trail head is a nice meadow with access to horse water that should hold up to 8 trailers. Forest Road 447 is narrow in spots with some tight turns that require care if pulling a goose-neck trailer. GPS 44.737745 -115.447640





Picture #PIS-8031 08/11/2004



Picture #PIS-8013 08/11/2004

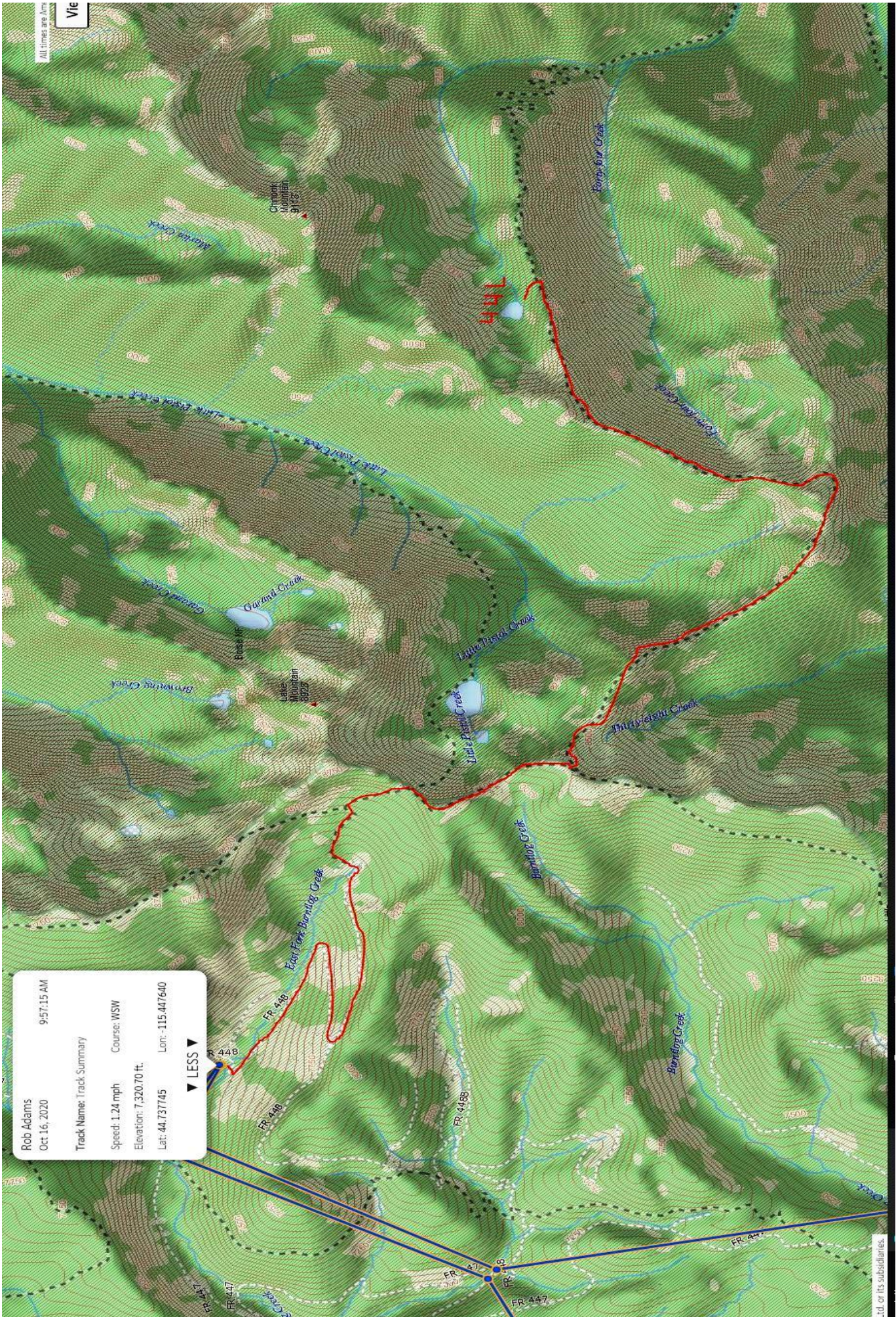
Pistol Lake Frank Church Wilderness Elev. 7,805ft.

44 Lake Picture



All times are AM

View



Rob Adams
 Oct 16, 2020 9:57:15 AM

Track Name: Track Summary
 Course: WSW

Speed: 1.24 mph
 Elevation: 7,320.70 ft.

Lat: 44.737745 Lon: -115.447640

▼ LESS ▼

